



Alex Mustakas • Artistic Director

# HURON COUNTRY PLAYHOUSE

## RENTAL INFORMATION PACKAGE



RR 1 70689 B Line, Grand Bend, ON, N0M 1T0

Box Office: 519-238-6000

Toll Free: 1-855-372-9866

[huroncountryplayhouse.com](http://huroncountryplayhouse.com)

For space availability, rental estimates, reservations, technical specifications and further information on fees and schedules, please contact: **Karen De Iuliis**, Groups, Events and Rentals Manager 519-621-5511 ext. 246. [karend@draytonentertainment.com](mailto:karend@draytonentertainment.com)

# HURON COUNTRY PLAYHOUSE

## ABOUT

Located in a picturesque country setting, just minutes from the shores of Lake Huron in Grand Bend, and less than one hour's drive from both Sarnia and London, the Huron Country Playhouse is the perfect spot for a truly unforgettable summer theatre experience. This historic venue has a spacious 642-seat Mainstage auditorium and an intimate 300-seat South Huron Stage. We have professional staff on hand to ensure all your production requirements are met and your event is a success.

## THEATRE INFORMATION

Mainstage capacity: 642 seats.  
South Huron Stage capacity: 300 seats.

The Huron Country Playhouse is wheelchair accessible. The box office, restrooms and refreshment area are all conveniently located on the main level, adjacent to the auditorium.

## MAINSTAGE SPECIFICATIONS

Proscenium width: 36'  
Proscenium height: 16'  
Total width of the stage: 70'  
Depth of the stage: 42'

The theatre is equipped with a fly system with four designated electrics positions and 20 available fly lines hung at various centres. The grid height is 39'6". The flies can be operated from the fly floor located in the stage left wing.

The loading dock and loading access is at street level.

The orchestra pit is accessed from backstage right and can accommodate 10 players. Use of the audio system is required when the pit is used. Six dressing rooms are available, accommodating up to 25 people.

## TECHNICAL INFORMATION

A basic lighting plot is provided with your rental which will be hung and circuited prior to your arrival. Changes to the basic plot can be accommodated.

Our sound system, which includes main speakers, on stage monitors, mixing console and amplifiers, is suitable for theatrical and dance presentations as well as lectures and audio-visual presentations. Arrangements can be made for the rental of microphones and other audio equipment. An in-house professional sound operator is required to operate the sound system.

## BOX OFFICE

Box Office service is available to all event producers. The Box Office telephones are staffed Monday through Friday, 9 a.m. to 5 p.m. The Box Office can accept payment via Mastercard, Visa and American Express over the telephone as payment for tickets. Ticket printing (general admission or reserved seating) includes set-up of the event in our computerized ticketing database. The Box Office is open weekdays from 9 a.m. to 5 p.m. from June through August. The box office will accept cash, cheque, Mastercard, Visa, American Express, and Interac as payment for tickets. For events on weekends or holidays, or from September through to May, the box office will open two hours prior to the event start time. The Box Office will prepare a report summarizing all ticket sales, revenues and fees. A URL link can be supplied so that patrons can access the Box Office services online via the producer's website.

## SOUTH HURON STAGE NOTE

For information about renting the South Huron Stage please contact **Karen De Iuliis**, *Groups, Events and Rentals Manager*.



# HURON COUNTRY PLAYHOUSE

## LOCATION



## SEATING CHART MAINSTAGE

STAGE

---

A	1	2	3	4	5	6	7	8	9	10	11	12	13	14	15	16	17	18	19	20	21	22	23	24	A													
B	1	2	3	4	5	6	7	8	9	10	11	12	13	14	15	16	17	18	19	20	21	22	23	24	25	B												
C	1	2	3	4	5	6	7	8	9	10	11	12	13	14	15	16	17	18	19	20	21	22	23	24	25	26	C											
D	1	2	3	4	5	6	7	8	9	10	11	12	13	14	15	16	17	18	19	20	21	22	23	24	25	26	27	D										
E	1	2	3	4	5	6	7	8	9	10	11	12	13	14	15	16	17	18	19	20	21	22	23	24	25	26	27	28	E									
F	1	2	3	4	5	6	7	8	9	10	11	12	13	14	15	16	17	18	19	20	21	22	23	24	25	26	27	28	29	F								
G	1	2	3	4	5	6	7	8	9	10	11	12	13	14	15	16	17	18	19	20	21	22	23	24	25	26	27	28	29	30	G							
H	1	2	3	4	5	6	7	8	9	10	11	12	13	14	15	16	17	18	19	20	21	22	23	24	25	26	27	28	29	30	31	H						
I	1	2	3	4	5	6	7	8	9	10	11	12	13	14	15	16	17	18	19	20	21	22	23	24	25	26	27	28	29	30	31	32	I					
J	1	2	3	4	5	6	7	8	9	10	11	12	13	14	15	16	17	18	19	20	21	22	23	24	25	26	27	28	29	30	31	32	33	J				
K	1	2	3	4	5	6	7	8	9	10	11	12	13	14	15	16	17	18	19	20	21	22	23	24	25	26	27	28	29	30	31	32	33	34	K			
L	1	2	3	4	5	6	7	8	9	10	11	12	13	14	15	16	17	18	19	20	21	22	23	24	25	26	27	28	29	30	31	32	33	34	35	L		
M	1	2	3	4	5	6	7	8	9	10	11	12	13	14	15	16	17	18	19	20	21	22	23	24	25	26	27	28	29	30	31	32	33	34	35	36	M	
N	1	2	3	4	5	6	7	8	9	10	11	12	13	14	15	16	17	18	19	20	21	22	23	24	25	26	27	28	29	30	31	32	33	34	35	36	N	
O	1	2	3	4	5	6	7	8	9	10	11	12	13	14	15	16	17	18	19	20	21	22	23	24	25	26	27	28	29	30	31	32	33	34	35	36	37	O
P	1	2	3	4	5	6	7	8	9	10	11	12	13	14	15	16	17	18	19	20	21	22	23	24	25	26	27	28	29	30	31	32	33	34	35	36	37	P
R	1	2	3	4	5	6	7	8	9	10	11	12	13	14	15	16	SOUND BOARD	26	27	28	29	30	31	32	33	34	35	36	37	R								

### Balcony

AA	1	2	3	4	5	6	7	8	9	10	11	12	13	14	15	16	17	18	19	20	21	22	23	24	25	26	27	28	29	30	31	32	33	34	35	36	AA					
BB	1	2	3	4	5	6	7	8	9	10	11	12	13	14	15	16	17	18	19	20	21	22	23	24	25	26	27	28	29	30	31	32	33	34	35	36	37	BB				
CC	1	2	3	4	5	6	7	8	9	10	11	12	13	14	15	16	17	18	19	20	21	22	23	24	25	26	27	28	29	30	31	32	33	34	35	36	37	38	39	40	41	CC



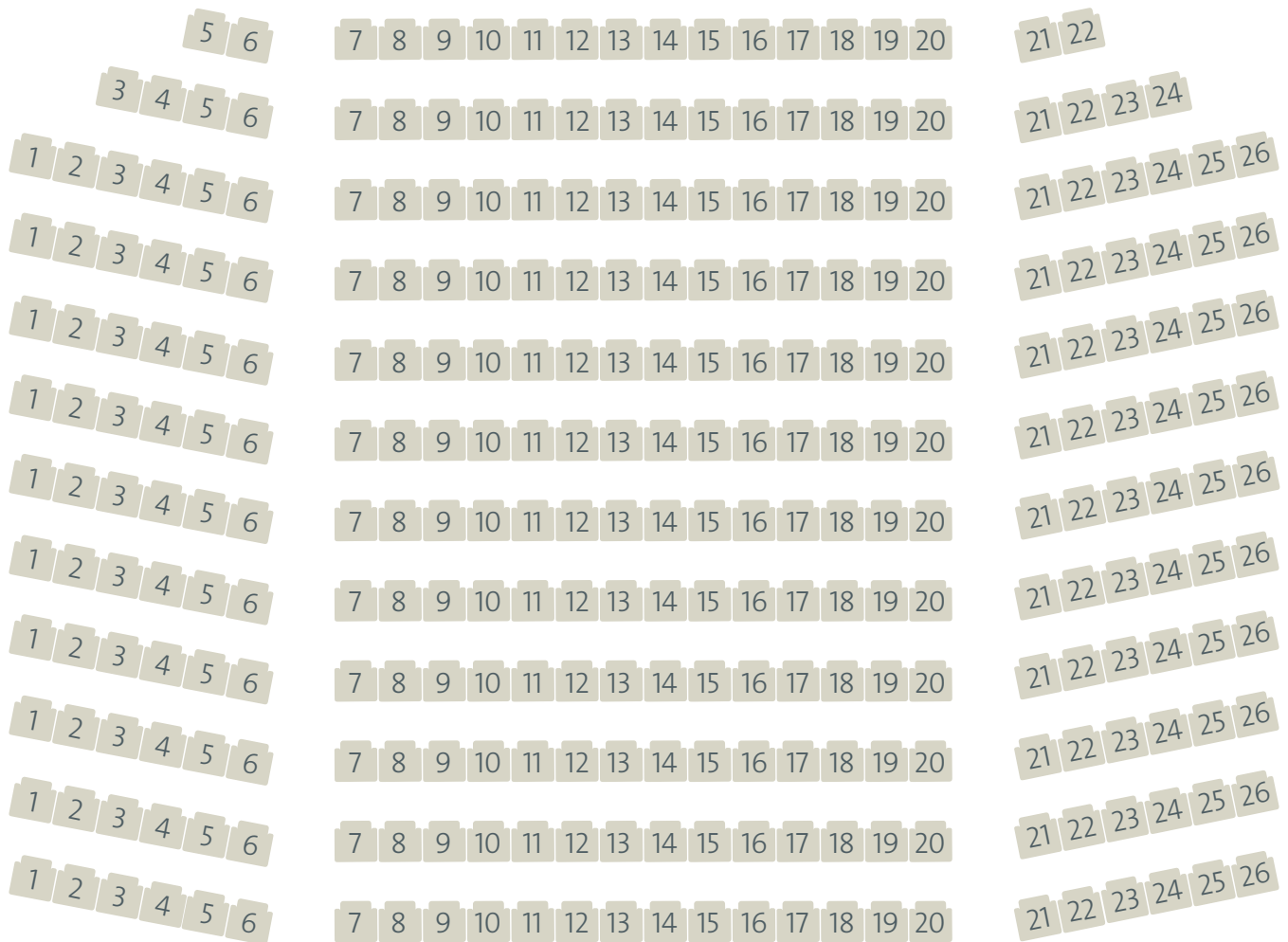
# HURON COUNTRY PLAYHOUSE

## SEATING CHART

### SOUTH HURON STAGE (FORMERLY PLAYHOUSE II)

STAGE

---



SOUTH HURON STAGE



Free Parking



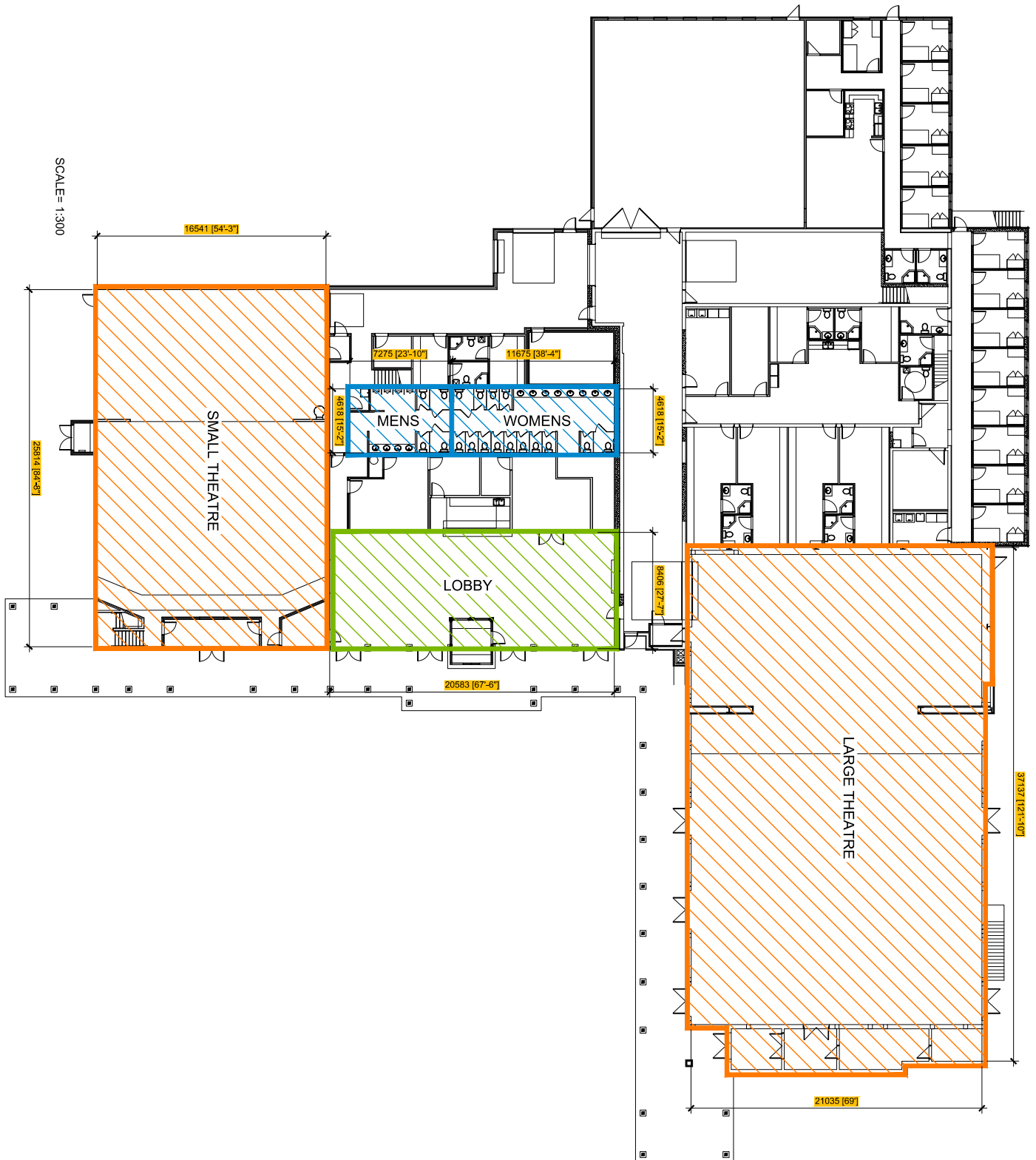
Wheelchair Accessible



300 Seats

# HURON COUNTRY PLAYHOUSE

## FLOOR PLAN





## RATES INFORMATION – MAINSTAGE

DAILY RENTAL RATES	COMMERCIAL	NON – PROFIT
Single performance (8 hour day)	\$2700.00	\$1900.00
Hourly rate after 8 hours	\$380.00	\$200.00

*Rates do not include mandatory items such as Head Technician, House Manager and Ushers, Ticket Charges and Credit Card Fees. All amounts are subject to HST.*

### PERSONNEL RATES

Minimum personnel for all types of theatre public event use is as follows:

One Facilities Staff	\$40.00 per hour
	\$60.00 per hour over 8 hours, before 8:00 a.m. or after midnight
One Head Technician	\$50.00 per hour
	\$75.00 per hour over 8 hours or before 8:00 a.m. or after midnight
One Audio Technician	\$40.00 per hour
	\$60.00 per hour over 8 hours, before 8:00 a.m. or after midnight
Front of House Manager	\$150.00 per performance
Ushers	\$125.00 flat rate per performance, subject to discretion of LESSOR
Box Office Staff	\$25.00 per hour outside of normal Box Office hours

Additional staff requirements depend on each event's technical needs and projected attendance.

Technician(s)*	\$40.00 per hour
	\$60.00 per hour over 8 hours, before 8:00 a.m. or after midnight

All staffing decisions are at the discretion of Drayton Entertainment and associated costs will be guaranteed to the theatre by the event producer.

*\*Use of the fly system and/or the house sound mix console requires a Drayton Entertainment technician(s).*

### THEATRE BOX OFFICE SERVICES

A \$1.00 per ticket surcharge will be assessed for all tickets sold or reserved through Drayton Entertainment's Box Office (including complimentary and no charge tickets). Consignment tickets printed at rate of \$0.32/ticket.

### CREDIT CARD/INTERAC SURCHARGE

A 3.5% fee per credit card and interac transaction will be assessed for all credit card and interac purchases. These fees will be accounted for and deducted from the final statement with the theatre.

### CAPITAL IMPROVEMENT FUND (CIF)

A \$1.00 fee per ticket CIF levee will be assessed for all tickets sold or reserved through Drayton Entertainment's Box Office (including complimentary, no charge tickets and consignment tickets).

### PAYMENT SCHEDULE

A 50% deposit is required upon signing the rental agreement. The full balance owing is due on the day and prior to the first performance or event.

For space availability, rental estimates, reservations, technical specifications and further information on fees and schedules, please contact:

**Karen De Iuliis, Groups, Events and Rentals Manager**  
**519-621-5511 ext 246 | karend@draytonentertainment.com**

## RATES INFORMATION – SOUTH HURON STAGE

DAILY RENTAL RATES	COMMERCIAL	NON – PROFIT
Single performance (8 hour day)	\$1275.00	\$900.00
Hourly rate after 8 hours	\$270.00	\$150.00

*Rates do not include mandatory items such as Head Technician, House Manager and Ushers, Ticket Charges and Credit Card Fees. All amounts are subject to HST.*

### PERSONNEL RATES

Minimum personnel for all types of theatre public event use is as follows:

One Facilities Staff	\$40.00 per hour
	\$60.00 per hour over 8 hours, before 8:00 a.m. or after midnight
One Head Technician	\$50.00 per hour
	\$75.00 per hour over 8 hours or before 8:00 a.m. or after midnight
One Audio Technician	\$40.00 per hour
	\$60.00 per hour over 8 hours, before 8:00 a.m. or after midnight
Front of House Manager	\$150.00 per performance
Ushers	\$125.00 per performance
Box Office Staff	\$25.00 per hour outside of normal Box Office hours

Additional staff requirements depend on each event's technical needs and projected attendance.

Technician(s)*	\$40.00 per hour
	\$60.00 per hour over 8 hours, before 8:00 a.m. or after midnight

All staffing decisions are at the discretion of Drayton Entertainment and associated costs will be guaranteed to the theatre by the event producer.

*\*Use of the fly system and/or the house sound mix console requires a Drayton Entertainment technician(s).*

### THEATRE BOX OFFICE SERVICES

A \$1.00 per ticket surcharge will be assessed for all tickets sold or reserved through Drayton Entertainment's Box Office (including complimentary and no charge tickets). Consignment tickets printed at rate of \$0.32/ticket.

### CREDIT CARD/INTERAC SURCHARGE

A 3.5% fee per credit card and interac transaction will be assessed for all credit card and interac purchases. These fees will be accounted for and deducted from the final statement with the theatre.

### CAPITAL IMPROVEMENT FUND (CIF)

A \$1.00 fee per ticket CIF levee will be assessed for all tickets sold or reserved through Drayton Entertainment's Box Office (including complimentary, no charge tickets and consignment tickets) and **included in the ticket price.**

### PAYMENT SCHEDULE

A 50% deposit is required upon signing the rental agreement. The full balance owing is due on the day and prior to the first performance or event.

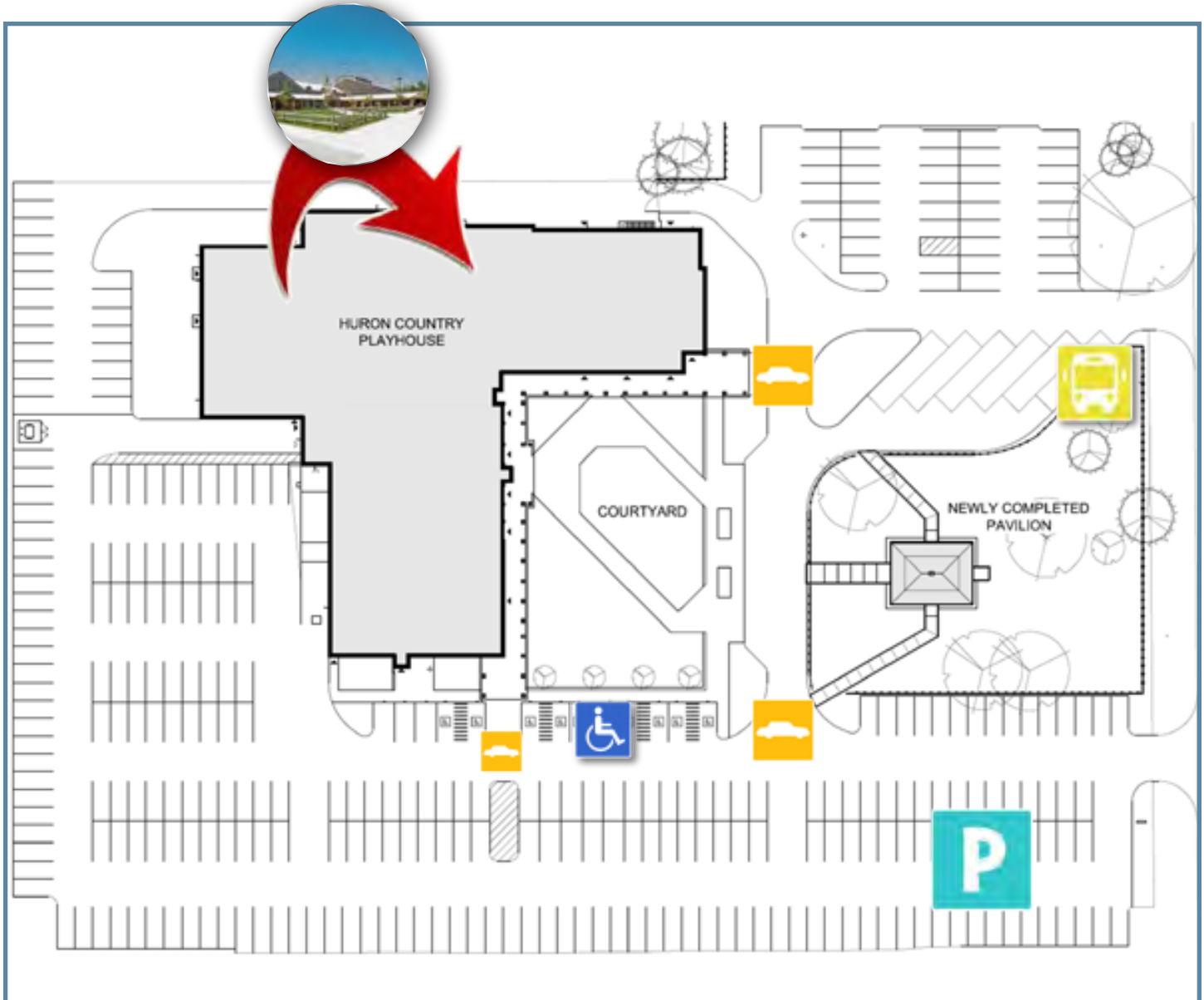
For space availability, rental estimates, reservations, technical specifications and further information on fees and schedules, please contact:

**Karen De Iuliis, Groups, Events and Rentals Manager**  
**519-621-5511 ext 246 | karend@draytonentertainment.com**



# HURON COUNTRY PLAYHOUSE

## PARKING MAP



### PARKING MAP LEGEND



Bus Parking



Accessible Parking



Free Theatre Parking  
(The whole lot)



Drop off Location

### HURON COUNTRY PLAYHOUSE

RR 1 70689 B Line, Grand Bend, ON, N0M 1T0

Box Office: 519-238-6000

Administration: 519-238-8387

Fax: 519-238-6587